

Waiting Station: a stop along the trolley route

The trolley line connecting Branford with New Haven, Hartford, north to Massachusetts and east along the shore started service in 1900. The Short Beach Waiting Station was one of several stores to open along the trolley route.



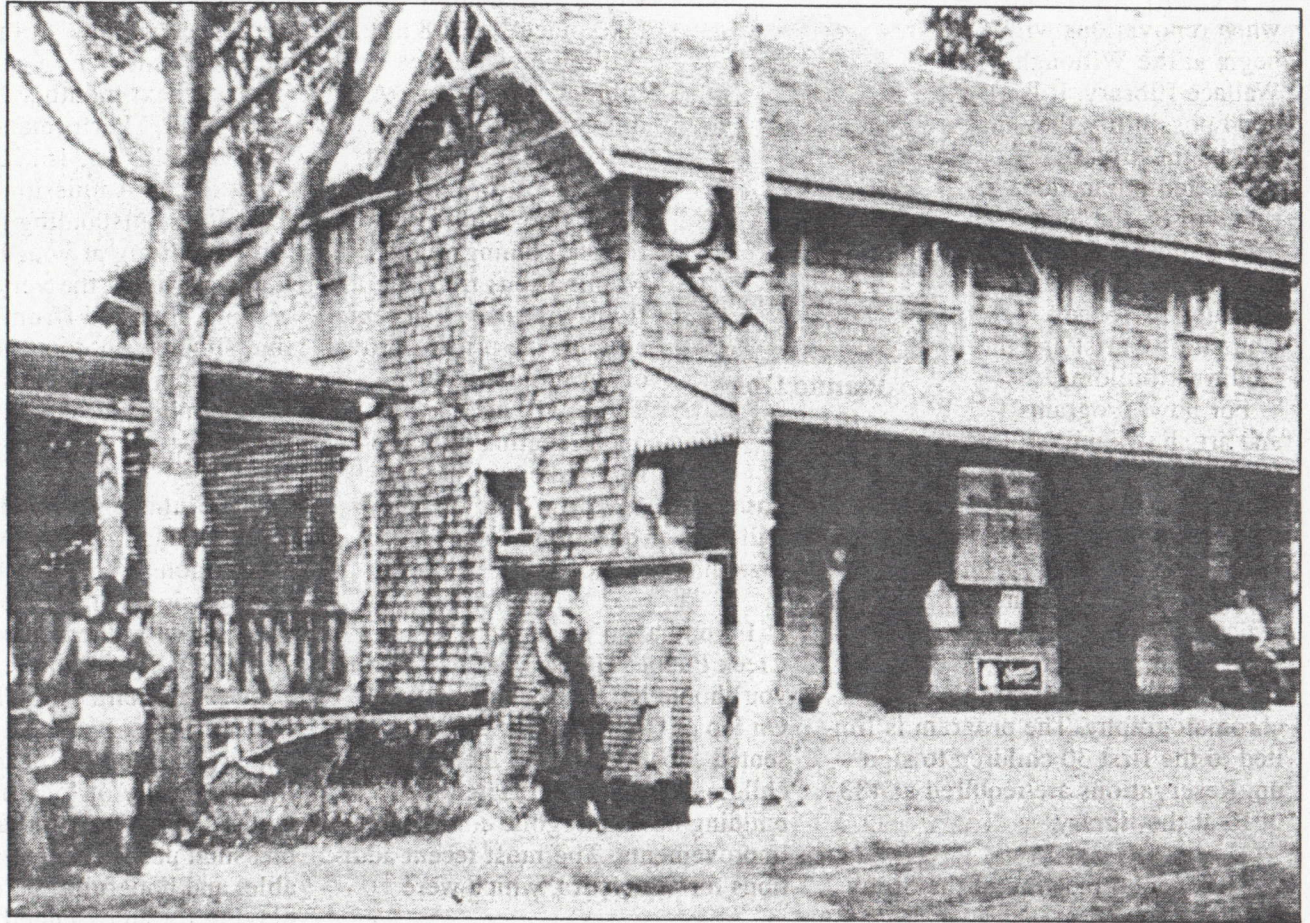
PICTURES OF THE PAST

Jane Bouley

These “waiting stations” sold goods to passengers and summer residents such as soda, ice cream, candy, postcards, newspapers, groceries and beach accessories. Often passengers boarded or disembarked from the trolley at the store, and local boys offered to carry the passengers’ luggage to the nearest summer hotel for a dime. People took the trolley to the waiting stations to obtain an ice cream cone.

William Knowles established the Short Beach Waiting Station about 1900 at the corner of the present day Shore Drive and Taylor Place. Shore Drive at that time was called Main Street. Walter Hill ran the Waiting Station for a number of years followed by Merritt E. Taylor who moved from Kensington to Short Beach in 1919. There was an apartment on the second floor where the family lived. Subsequent owners were the VerWholt and Brennan families.

Harry Tucker ran the Waiting Station from 1934 until 1947 and moved the store one building west to 130 Shore Drive. The store featured a luncheon



The Short Beach Waiting Station at 134 Shore Drive circa 1917.

counter and a pinball machine. “Pop” Frankish ran the Waiting Station for 20 years after the Tuckers. Subsequent proprietors were the Weed-Gibbs family and the Ceccolini family. Pat and Ann Marie

Marchitto moved the Waiting Station to the center of Branford in 1981 where it is still in operation at 1048 Main St. A restaurant now occupies the former Waiting Station site at 130 Shore Drive.